

# Quito - Chocó Andino

## Uniting Urban and Rural for Harmony Between People and Nature in our Food Systems

CITY-REGION STRATEGY  
IN THE IMPLEMENTATION OF  
THE URBAN FUTURES PROGRAM

### OUR COLLECTIVE JOURNEY



forward >> we grow

### Assessing the Challenges...

#### YOUTH LEADERSHIP AND PARTICIPATION GAPS<sup>1</sup>

Existing platforms for participation and decision-making lack mechanisms that encourage youth involvement and nurture their leadership.

#### CHALLENGES TO VALUE ADDITION AND COMPETITIVENESS

In the food processing sector, organizational, technological, and innovation challenges hinder the ability of local inhabitants to add value to their products, limiting their competitiveness against large corporations and cheaper imported or smuggled goods.

#### PRODUCTIVE CAPACITY<sup>4</sup>

**aprox. 22%** of the territory is suitable for crops and pasture, limited by the steepness of the land

#### FOOD INSECURITY AND POVERTY<sup>5</sup>

**21.8%** of households in the city region live in poverty, characterized by unmet basic needs (UBN)

**20.4%** is the average UBN rate experienced by young women

#### LENGTHY DISTRIBUTION CHAINS<sup>2</sup>

**82.8%**

of the city region's agricultural products are marketed through intermediaries

#### CLIMATE CHANGE<sup>3</sup>

**4%-4.8%**

Predicted increases in precipitation

**0.4°C-1°C**

Expected rise of temperatures

### But also great opportunities...

✓ In 2023, Quiteños voted to ban metallic mining in the Chocó Andino territory, which sparked significant attention and collaboration. This decision strengthened urban-rural connections and created new opportunities for commercialization and engagement for youth from both areas.

✓ The steep slopes and abundant rainfall create ideal conditions for implementing agroecological and regenerative production systems.

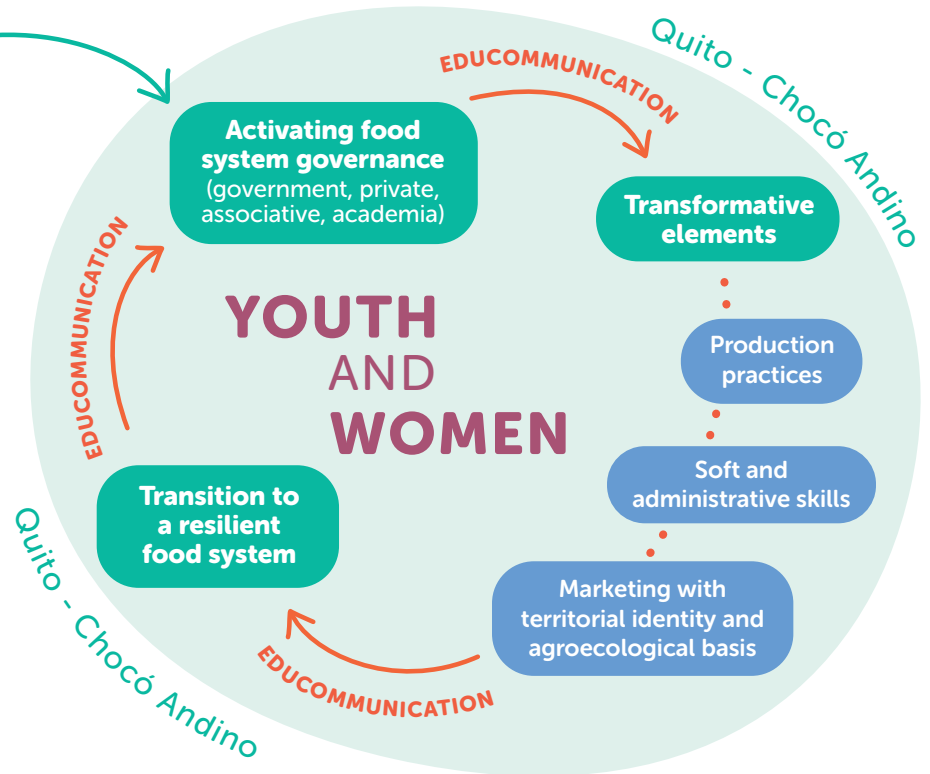
✓ The Biosphere Reserve governance roundtables are being activated.

✓ Revaluation of rural culture, aligned with the growth of a tourism industry.



# OUR THEORY OF CHANGE EXPLAINED

If multilevel governance is strengthened, encouraging the participation of youth and women in decisions about the food system, we can have a more cohesive impact on transformative elements: enhance agroecological marketing mechanisms, capacity building for regenerative and responsible production and consumption, and communicate with transformative narratives, which will facilitate the transition to a resilient food system with a territorial identity. This system, articulated on existing participation platforms, promotes collective action, benefiting consumers in urban Quito and producers in the rural Andean Chocó, and consolidates the Andean Chocó as a territory of life, free of extractivism.



## Approaches to the city-region strategy



## Our agreed roadmap

