

**LOCAL AUTHORITY
WHAT WOMEN WANTED:
50/50 BY 2015
NOMINATION COURT RESULTS**



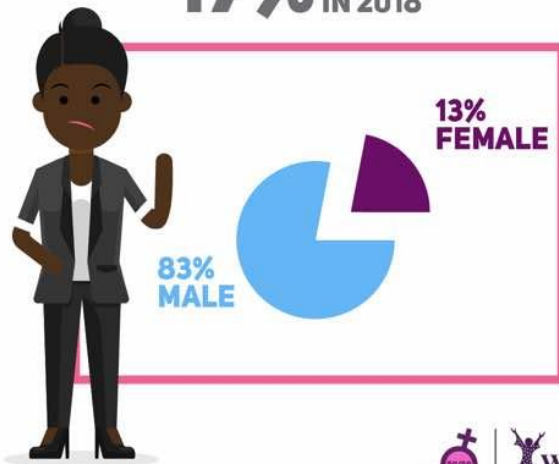
**50%
MEN**

**50%
WOMEN**

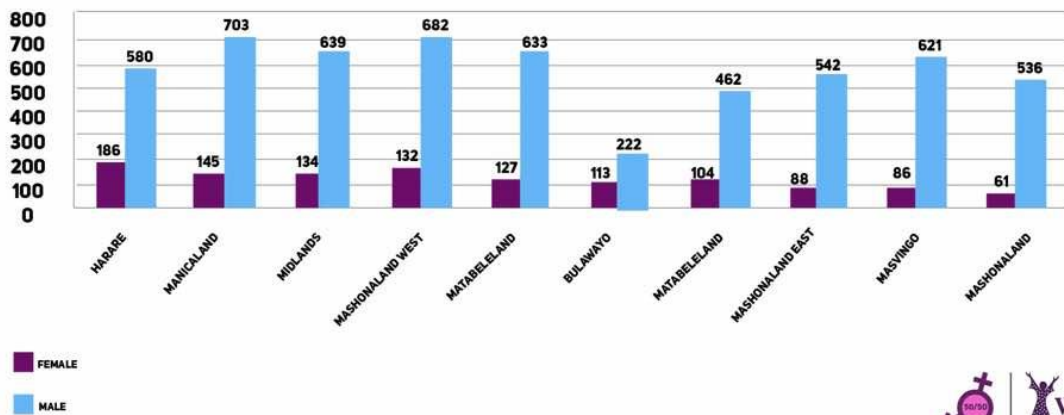
VS

WHAT WOMEN ARE GETTING:

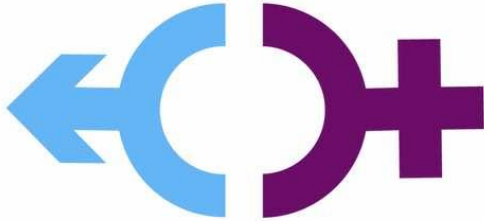
17% IN 2018



**LOCAL AUTHORITY: FEMALES VS MALES PER PROVINCE
NOMINATION COURT RESULTS**



**NATIONAL ASSEMBLY CANDIDATES
BY DIRECT ELECTION
WHAT WOMEN WANTED:
50/50 BY 2015
NOMINATION COURT RESULTS**



**50%
MEN**

**50%
WOMEN**

VS

WHAT WOMEN ARE GETTING:

15% IN 2018



**85%
MALE**

**15%
FEMALE**



**NATIONAL ASSEMBLY: FEMALES VS MALES PER PROVINCE
NOMINATION COURT RESULTS**

