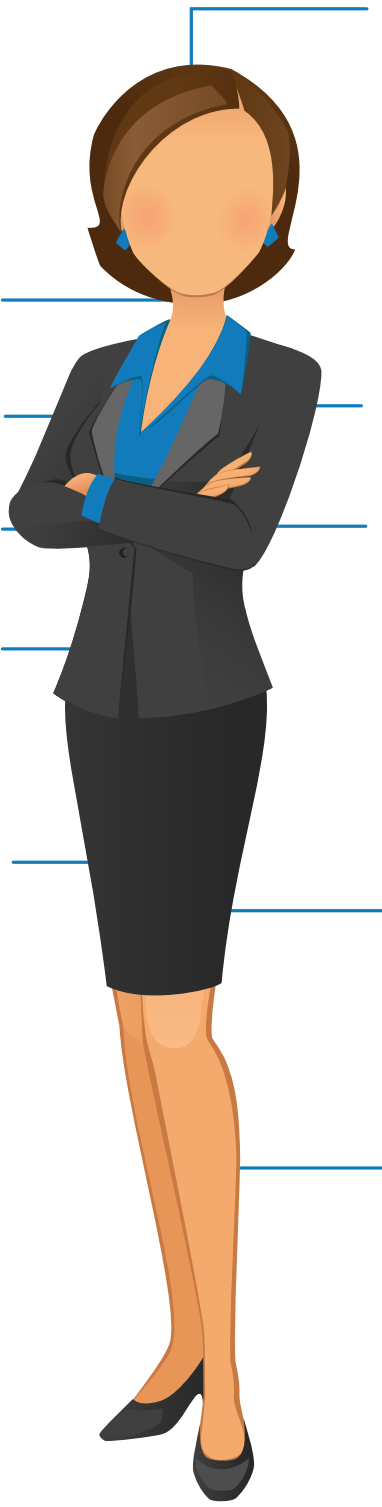


Beirut Bar Association



Founding Date

1919

Mandate of Board

2 years

Women's Committee Existence

Yes

Previous Female Leadership

0 female presidents
in Tripoli
total number of 17
presidents to date



1



2011

President
Amale Haddad

Number of Registered Lawyers

4,926



2015

Voted in the last elections

7,400



2015

Members of the Bar

5,031



3,031



2016

Interning Lawyers

527



632



2017 Board



1 woman out of 12 board members

8 Members elected

4 Members appointed



None in Tripoli

Registration Fee



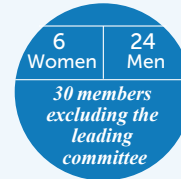
2,500

USD / year

Legislative Committee



1 woman out of 5 members leading the committee



Total Number of Committees

31

including a women's committee and
the legislative committee



Women occupy 17% of leadership
positions in committees (18/106)

In Beirut

Special Provisions or Quotas in Bylaws
to Promote Female Participation

None

Structural Gaps



Almost 55% of interning lawyers are women



Women occupy 17% of leadership positions
in committees



The current
Beirut board

(8.3%)

1/12 members



None in Tripoli

Common Stereotypes



A female lawyer with the same capabilities
as a man is "rude", and "bossy"



Order of Physician

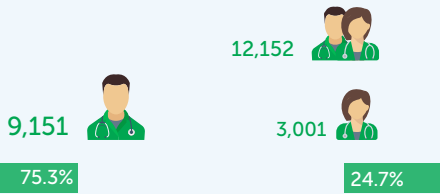


Women's Committee Existence

No

Number of **Registered Doctors**

2018



Registration Fee

2,000 USD/year

Previous Female Leadership President

0 female presidents in Beirut and Tripoli throughout the syndicate's history

Special Provisions or Quotas in Bylaws to Promote Female Participation

None

2018



نقابة صيادلة لبنان
ORDER OF PHARMACISTS OF LEBANON



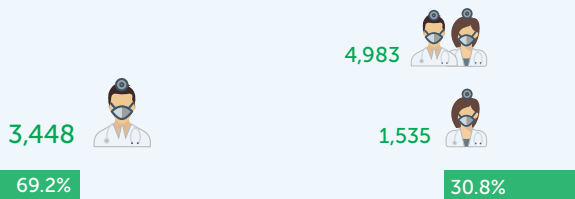
REGISTERED DENTISTS



REGISTERED PHYSIOTHERAPISTS



REGISTERED - PRACTITIONER DENTISTS



REGISTERED PHARMACISTS



2018 Board - Dentists

0 female

2018 Board - Pharmacists

1 woman out of 12 board members

Structural Gaps

1946 0 female presidents since the union's creation

29% of all registered doctors in Lebanon are women

2004 2017 6.25% - 19%

The current board members 3/16

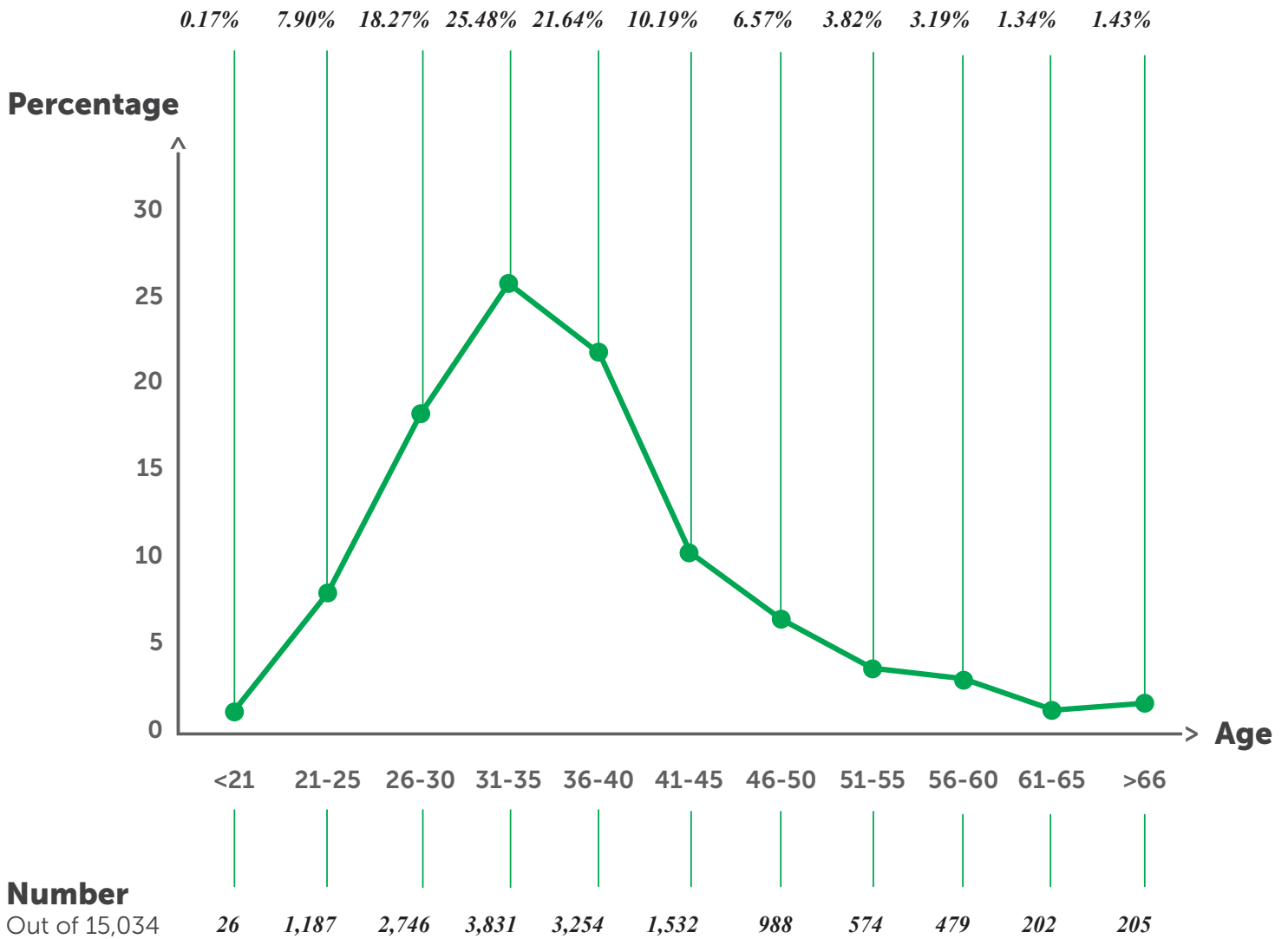
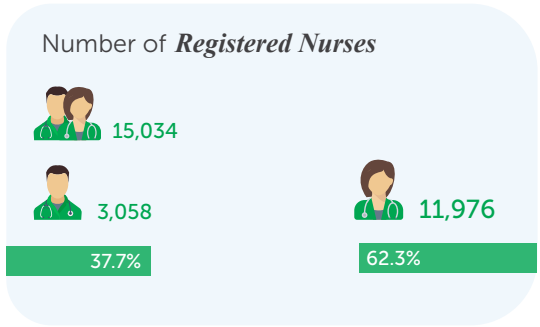
None in Tripoli

Common Stereotypes



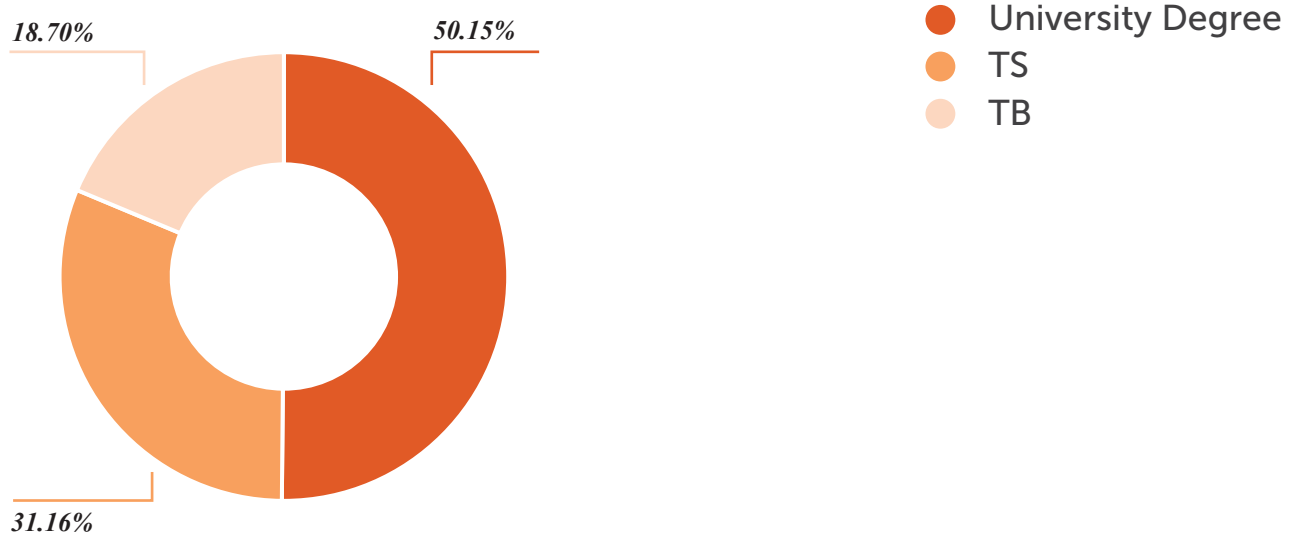
Women not socially expected to provide for the financial needs of the family

Order of Nurses

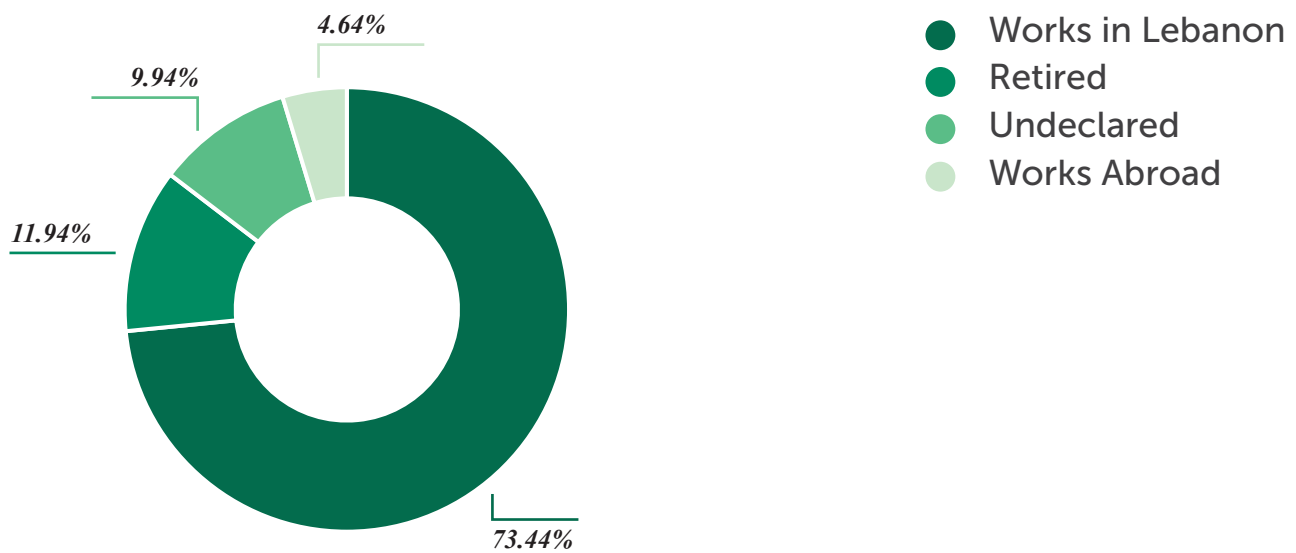


Number
 Out of 15,034

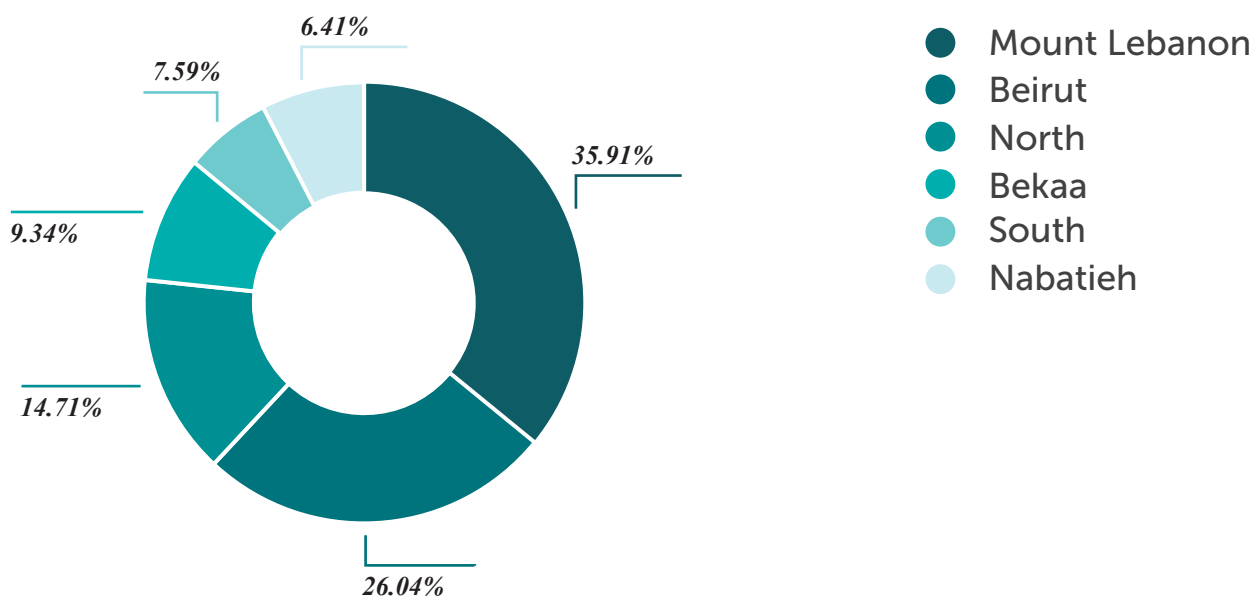
Degree:



Work Status:



Works in:



Order of Engineers and Architects



Women's Committee Existence

No

Number of Registered Engineers and Architects

2018

WORKING ENGINEERS AND ARCHITECTS

95,563

37,868

8,695

81.3%

18.7%

RETIRED ENGINEERS AND ARCHITECTS

1,939

1,896

43

97.7%

2.3%

Previous Female Leadership

President

0 female presidents throughout the syndicate's history

2017 Board



2 women out of 16 board members

12.5%

Registration Fee

2,000 USD/year

Total Number of Committees

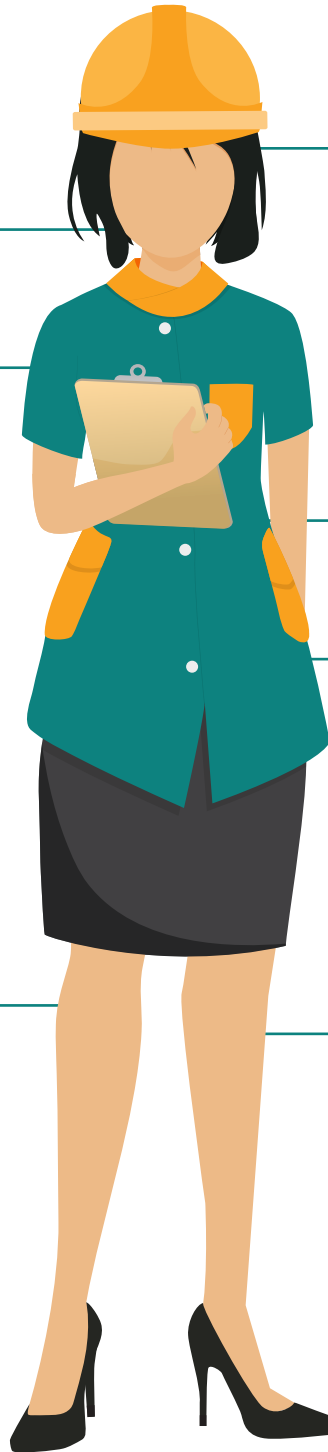
29 including seven executive branches of the Syndicate

32 5
In the executive branches

10 women out of 193 occupy leadership positions in committees

Special Provisions or Quotas in Bylaws to Promote Female Participation

None



Structural Gaps

1956



0 female presidents since the union's creation

12.8% of all registered Architects and Engineers are women



The current board members (12.5%)

13.5% of executive branch members are women



Women occupy 5% of leadership positions in 29 committees

Common Stereotypes

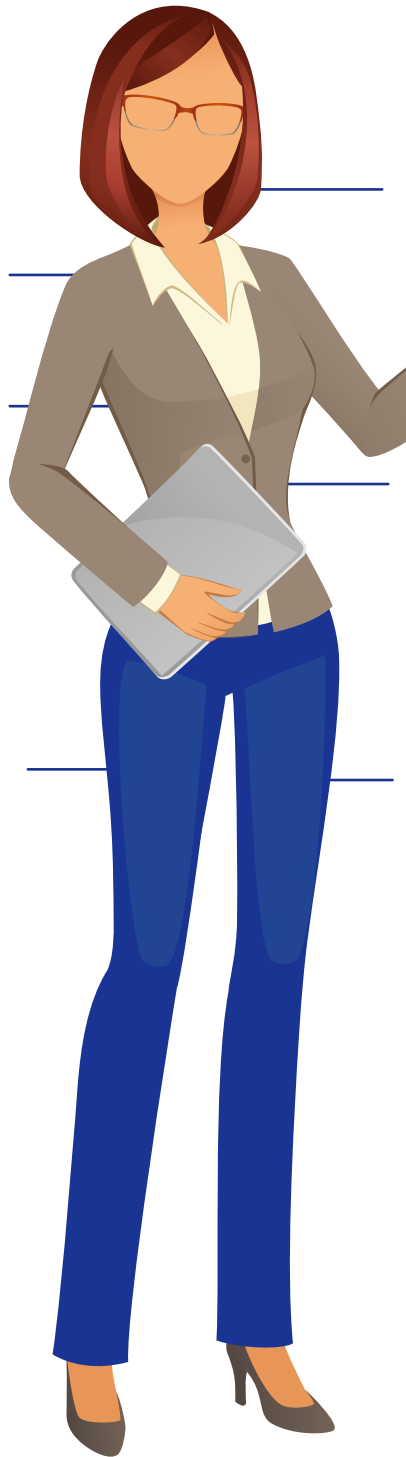


Women are "bad" engineers as the profession is masculine



Women tend to receive (and accept) secretarial job offers

Teachers Union



Women's Committee Existence

No

Number of Studying Education

TEACHERS IN PRIVATE SCHOOLS

Elementary

36,966 

5,196  14.2%

31,320  85.8%

Secondary

10,812 

4,329  40.1%

6,483  59.9%

TEACHERS IN PUBLIC SCHOOLS

Elementary

26,535 

4,030  15.2%

22,505  84.8%

Secondary

11,257 

3,830  34.1%

7,427  65.9%

2017 Board



No female out of 12 council members

Registration Fee

 20 USD / year

Special Provisions or Quotas in Bylaws to Promote Female Participation

None

Previous Female Leadership President



0 female presidents in the history of the union

Structural Gaps

No more than 1 woman out of 12 board members in recent years (0 today)

Common Stereotypes



Logistics, such as time (late) and duration of the meetings make the space exclusive and more challenging for women to attend



Women are "fit" for teaching, as it is perceived as a continuation of their "caretaker" role in the family

Council of Notaries



Number of *Notaries*

175 

82 

48.8%

86 

51.2%

2018 Board



30%

3 women out of 10 board members

